



TON

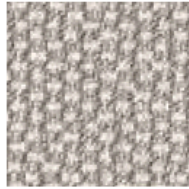
Category D

■ Dante

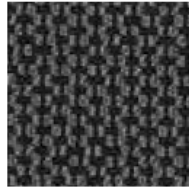
Composition	Width	Abrasion resistance	Pilling	Self-extinguishing	Ecology	Cleaning
95% Merino virgin wool, 5% polyamide	140 cm	52 000 MD	4-5	BS 5852 Crib 5 California TB117-2013 DIN 4102-1 Class B2	RAL-UZ 117 Appendix 2+3	



black



chrom



ilanoso



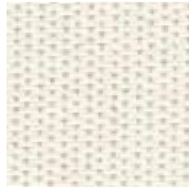
snow

■ Sand

Composition	Width	Abrasion resistance	Pilling	Self-extinguishing	Ecology	Cleaning
100% Trevira CS	140 cm	50 000 MD	4	BS 5852 Crib 5 ISO 8191 Part 1 & 2 DIN 4102 Class B1	Oeko-Tex	



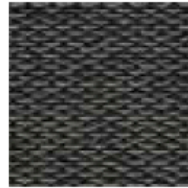
01/90



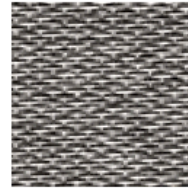
02/00



06/78



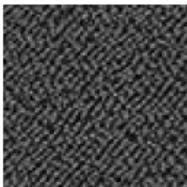
07/88



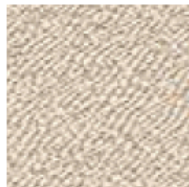
10/80

■ Sera

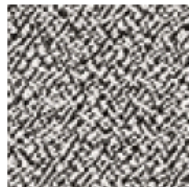
Composition	Width	Abrasion resistance	Pilling	Self-extinguishing	Ecology	Cleaning
96% Merino virgin wool, 4% polyamide	140 cm	122 000 MD	4-5	BS 5852 Crib 5 California TB117-2013 DIN 4102-1 Class B2	RAL-UZ 117 Appendix 2+3	



anthrazit



calla




pepper



walnut

Category D

■ Topia

Composition	Width	Abrasion resistance	Pilling	Self-extinguishing	Ecology	Cleaning
95% Merino virgin wool, 5% polyamide	150 cm	50 000 MD	5	BS 5852 Crib 5 California TB117-2013 DIN 4102-1 Class B2	RAL-UZ 117 Appendix 2+3	



bronze



curry



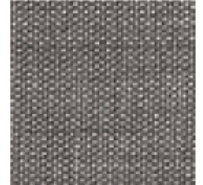
heart



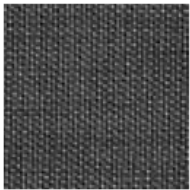
messing



orion




platin



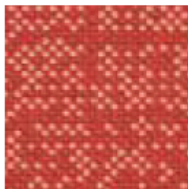
schiefer

■ Walker

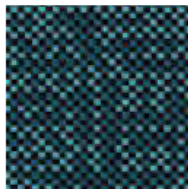
Composition	Width	Abrasion resistance	Pilling	Self-extinguishing	Ecology	Cleaning
100% Trevira CS	150 cm	45 000 MD	5	BS 5852 Crib 5 ISO 8191 Part 1 & 2 DIN 4102 Class B1	Oeko-Tex	



01



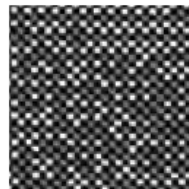
10



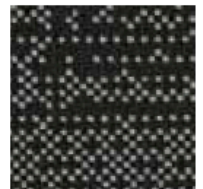
40



68



80



88